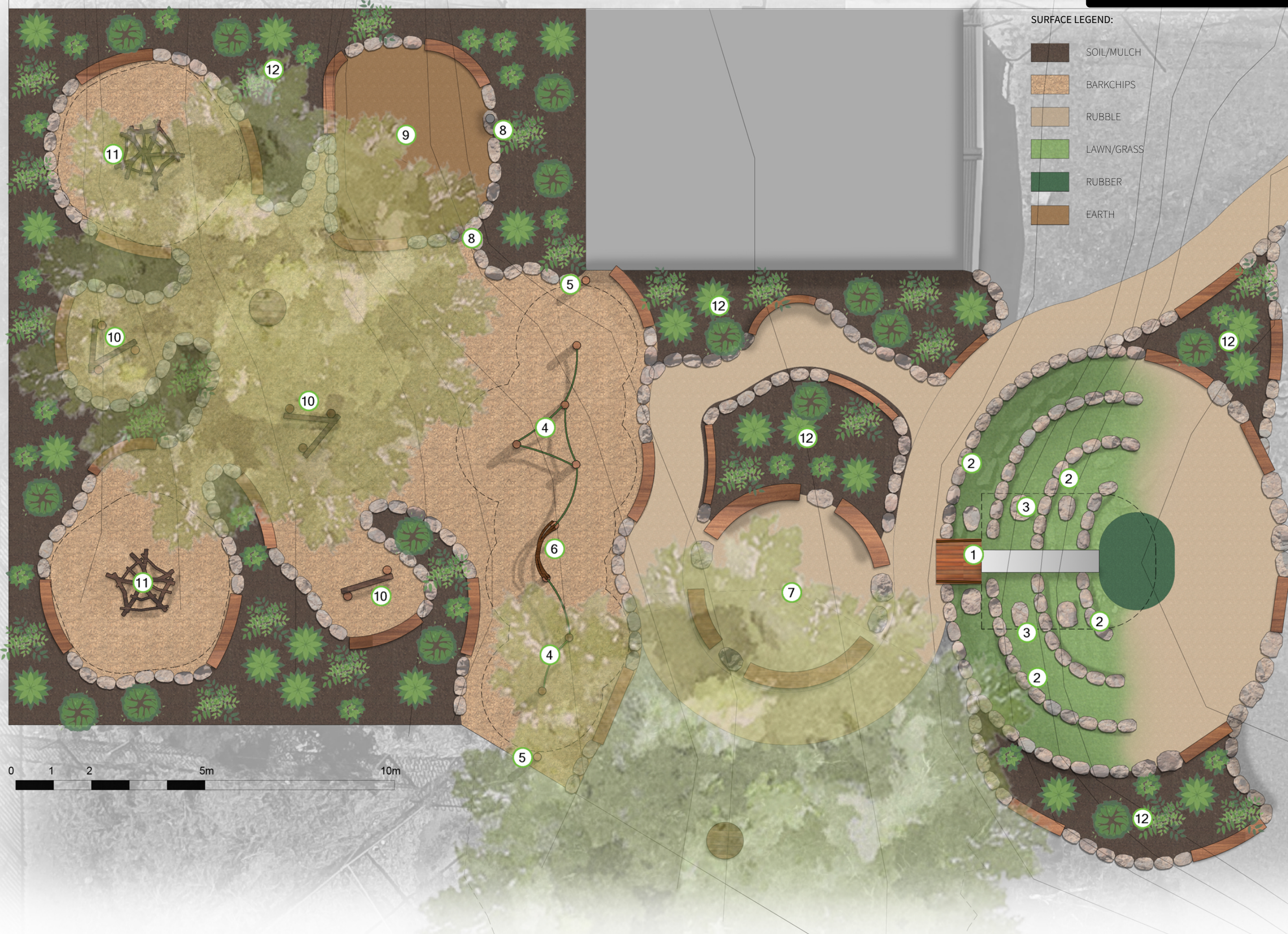


01 | OVERALL SITE PLAN



SURFACE LEGEND:

- SOIL/MULCH
- BARKCHIPS
- RUBBLE
- LAWN/GRASS
- RUBBER
- EARTH



CLIMBING TREE
CREATIONS PTY LTD

CONTACT

SIMON@CLIMBINGTREE.COM.AU
0488 499 674

16 WILSON STREET ROYAL PARK, SA 5014

PROJECT

GOLDEN GROVE LUTHERAN PRIMARY SCHOOL

ADDRESS

21/23 RICHARDSON DR, WYNN VALE, SA 5127



GOLDEN GROVE LUTHERAN
PRIMARY SCHOOL

DESIGN

CLIMBING TREE CREATIONS

CONCEPT/ DRAWN BY

TT

CHECKED BY

KU

SCALE

1:100 @ A3

STAGE

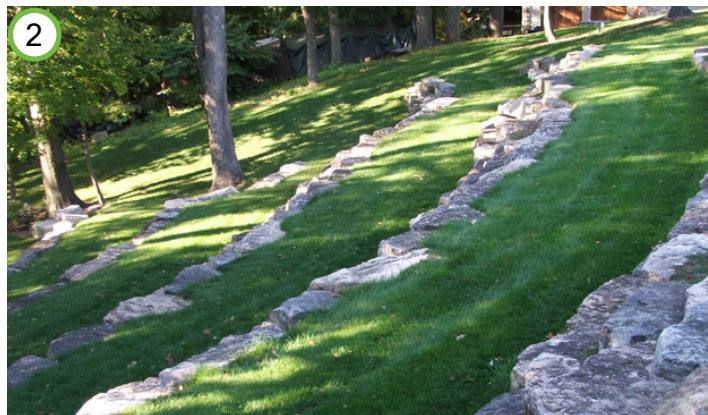
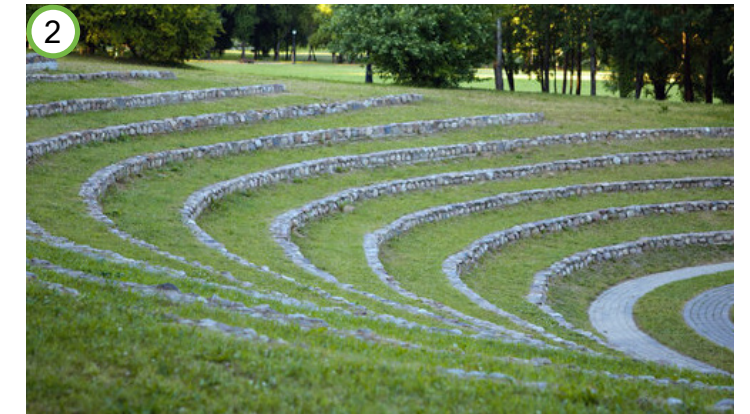
CONCEPT

DATE

06/03/2023



- 1 Embankment Slide - feel the rush of joy as your body experiences the quick downwards force
- 2 Amphitheatre - taking advantage of the existing slope, this natural rock amphitheatre allows for an array of activities such as performing, observing, and jumping
- 3 Stepping Stones - stones for jumping along or to help users scale the hill
- 4 Low Ropes/Balance Course - a combination of rope traverses, also serves as a clear play boundary for loose parts play
- 5 Post Bollards - a row of posts that clearly define the space between the loose parts play and the gross motor area
- 6 Arbour - natural branches used to create an inviting entrance way into creative play space
- 7 Meeting Circle - gathering spot for small classes with outdoor learning opportunities
- 8 Carving Bowls - great for grinding stones and mixing mud with loose plant material



- 9 Digging Patch - nice spot for those who want to get immersed with the earth, engages fine motor skills and imagination

- 10 Cubby Frames - posts provide a framework for collaborative cubby building, promotes social play

- 11 Stick Cubby - natural hideouts, tucked away amongst the garden

- 12 Garden Beds - for growing a variety of sensory and native plants

